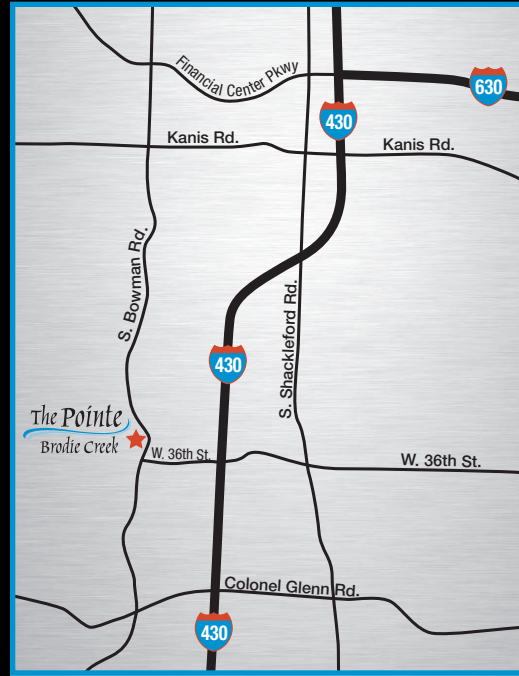


## Community Amenities

- ◆ Gated Access Community
- ◆ 20,000 SF Modern Clubhouse
- ◆ Late Night Concierge Services
- ◆ 24 Hr Fitness Center with PRECOR Equipment
- ◆ 78 Seat Movie Theater
- ◆ Conference Room
- ◆ Fitness on Demand
- ◆ Elite Poker and Wine Room
- ◆ Library/Study Room
- ◆ Cyber Lounge featuring Starbucks Java Bar
- ◆ Tanning Rooms
- ◆ Covered Parking & Garages
- ◆ Resort Style Pool with Cabanas
- ◆ Covered Outdoor Kitchen
- ◆ Sports Lounge
- ◆ Bar-B-Que Grills w/Picnic Area
- ◆ High Speed Internet Access at the Pool and Clubhouse
- ◆ Three Outdoor Firepits

## Apartment Amenities

- ◆ Designer Furniture; Fully Equipped with Housewares & Accessories
- ◆ Deluxe Linens
- ◆ Full Size Washer & Dryer
- ◆ All Utilities Included
- ◆ Free High Speed/Wireless Internet
- ◆ Flat Screen HD TV's
- ◆ Private Balconies
- ◆ Kitchen Island w/built in Wine Rack
- ◆ Stainless Steel Appliances
- ◆ Kitchen Pantry
- ◆ Granite Countertops
- ◆ Soak Tub
- ◆ Ceramic Tiled Baths
- ◆ Glass Showers Featuring Rain Showerheads
- ◆ Recessed Lighting
- ◆ Ceiling Fans



3400 S. Bowman Rd  
Little Rock, AR 72211

501.221.3377  
Fax 866.860.2537

[www.pointebrodiecreek.com](http://www.pointebrodiecreek.com)



 **RICHARDSON**  
**PROPERTIES, LLC**

# The Pointe Brodie Creek

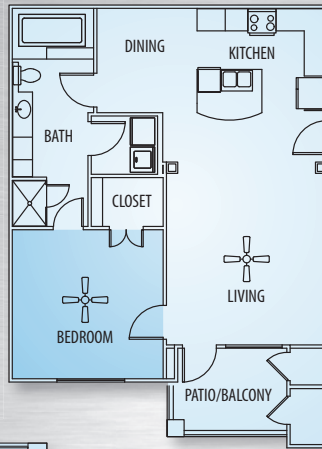
*Luxury Corporate Living*



# The Pointe

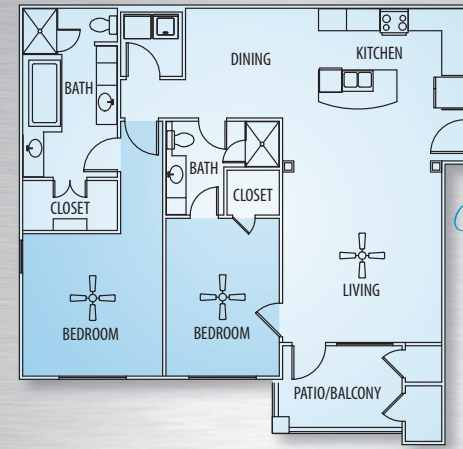
## Brodie Creek

Luxury Corporate Living



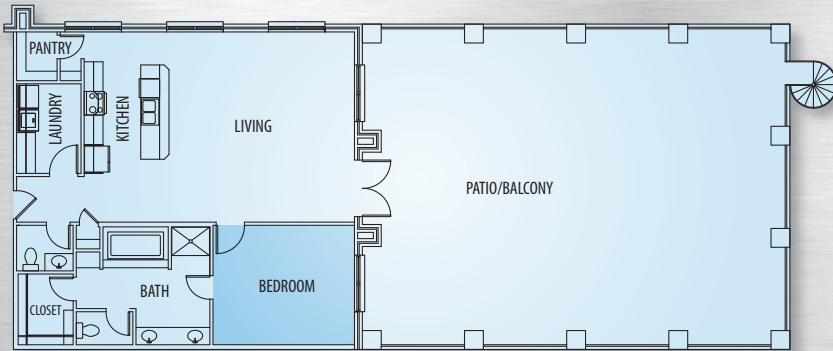
*Richland*

1 Bedroom  
1 Bath  
900 sq. ft.\*



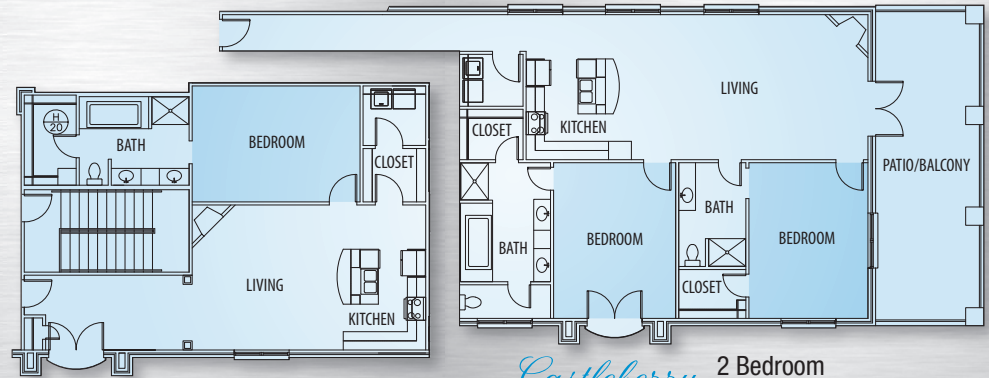
*Kingston*

2 Bedroom  
2 Bath  
1250 sq. ft.\*



*Carlton*

1 Bedroom  
1 Bath  
1235 sq. ft.\*



*Weddington*

1 Bedroom  
1 Bath  
1100 sq. ft.\*

*Castleberry*

2 Bedroom  
2 Bath  
1600 sq. ft.\*

\*Square footage is approximate.

